

- Nenndrehmoment von 50 N·m ... 10000 N·m
 - Genauigkeitsklasse optional 0,05% v. Endwert
 - Flansch-Flansch-Lösung
 - Durchgangsbohrung
 - Sehr kurze axiale Baulänge
 - Hohe Drehsteifigkeit
 - Zuverlässig und robust
 - Einfache Handhabung und Montage
 - Sonderausführungen auf Anfrage
- *Nominal torque from 50 N·m ... 10000 N·m*
 - *Accuracy class optional 0.05% f. scale*
 - *Flange-flange-solution*
 - *Through hole*
 - *Very short axial length*
 - *High torsional stiffness*
 - *Reliable and durable*
 - *Simple handling and assembly*
 - *Special versions on request*

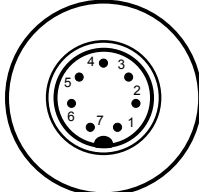


Technische Daten - Specifications

| Artikel-Nr. Article-No. | Nennmoment Nominal Torque [N·m] | Federkonstante Springrate [N·m/rad] | Massen- trägheits- moment Mass Moment of Inertia [kg·m ²] | | Grenzlängskraft Limit Thrust Load [N] | Grenzquerkraft Limit Shear Force [N] |
|----------------------------|---------------------------------------|---|---|------------------------|---|--|
| | | | Antriebsseite Drive Side | Messseite Test Side | | |
| 106151 | 50 | 2,0E+05 | 1,1E-03 | 4,0E-04 | 600 | 280 |
| 102923 | 100 | 2,0E+05 | 1,1E-03 | 4,0E-04 | 600 | 280 |
| 103935 | 200 | 3,6E+05 | 2,5E-03 | 1,0E-03 | 920 | 400 |
| 103938 | 500 | 1,2E+06 | 7,4E-03 | 3,4E-03 | 2100 | 620 |
| 103939 | 1000 | 2,1E+06 | 7,4E-03 | 3,4E-03 | 2800 | 1200 |
| 103940 | 2000 | 6,2E+06 | 1,6E-02 | 9,1E-03 | 3800 | 1900 |
| 102924 | 5000 | 1,3E+07 | 6,5E-02 | 4,2E-02 | 6600 | 5200 |
| 113927 | 10000 | 2,6E+07 | 6,5E-02 | 4,2E-02 | 8100 | 9000 |

| D-2268 | | |
|---|---------------------|---|
| Genauigkeitsklasse - Accuracy class | % v. E - f. s. | 0,1 |
| Reproduzierbarkeit - Repeatability (DIN 1319) | % | ±0,02 |
| Speisespannung - Excitation voltage | VDC | 2 ... 12 |
| Brückenwiderstand - Bridge resistance | Ω | 2000 |
| Nennkennwert - Nominal sensitivity | mV/V | 1 [≤50 N·m; 0,5] ±0,1% |
| Referenztemperatur - Reference temperature | °C | 23 |
| Nenntemperaturbereich - Nominal temperature range | °C | -5 ... 45 |
| Gebrauchstemperaturbereich - Service temperature range | °C | -15 ... 55 |
| Temp. koef. des Nullsignals - Temp. coeff. of zero signal | % v. E./K - f. s./K | ±0,02 |
| Temp. koef. des Kennwerts - Temp. coeff. of sensitivity | % v. E./K - f. s./K | ±0,01 |
| Gebrauchsdrehmoment (statisch) - Service torque (static) | % v. E - f. s. | 150 |
| Grenzdrehmoment (statisch) - Limit torque (static) | % v. E - f. s. | 200 |
| Bruchdrehmoment (statisch) - Ultimate torque (static) | % v. E - f. s. | >300 |
| Max. dynam. Belastung - Max. dynamic load (DIN 50100) | % v. E - f. s. | 70 (Spitze - Spitze) - (peak - peak) |
| Schutzart - Level of protection (DIN EN 60529) | | IP54 |
| Elektrischer Anschluss - Electrical connection | | 7-polig Serie 712 - 7-pin series 712 ¹ |

Anschlussbelegung - Pin Connection

| 7-polig - 7-pin | D-2268 | |
|--------------------|---|---|
| Pin 1 | Speisung (-) - Excitation (-) | <div style="text-align: right;">Serie - Series 712</div>  <div style="text-align: center;">Draufsicht - Top view</div> |
| Pin 2 | Speisung (+) - Excitation (+) | |
| Pin 3 | Schirm - Shield | |
| Pin 4 | Signal (+) - Signal (+) | |
| Pin 5 | Signal (-) - Signal (-) | |
| Pin 6 | Kontrollsignal (Option) - Control signal (option) | |
| Pin 7 | NC | |

¹ Kabeldose bei Erstauslieferung im Lieferumfang enthalten - Female cable connector in scope of delivery at first delivery

Optionen/ Zubehör - Options/ Accessories

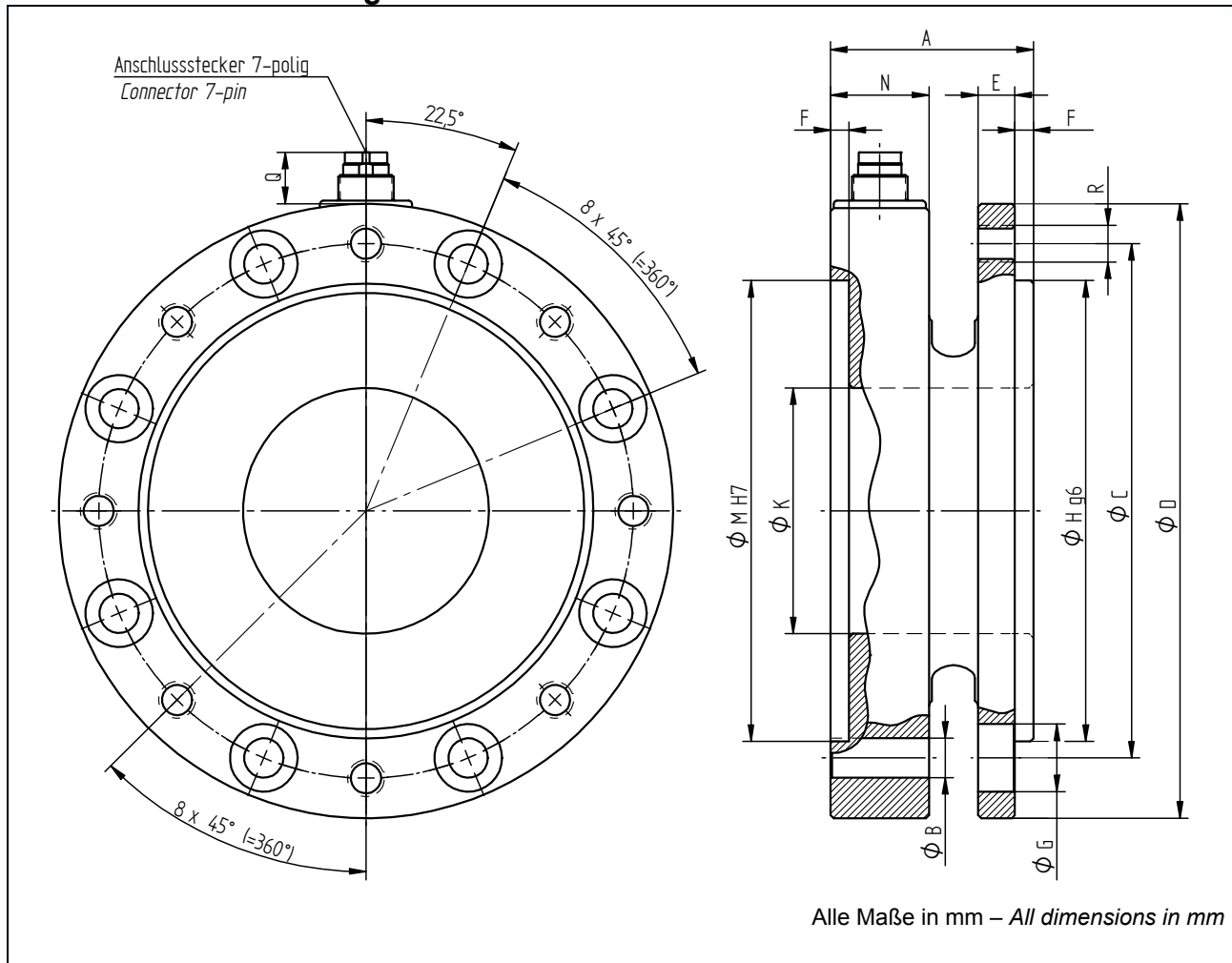
| Artikel-Nr. - Article-No. | Bezeichnung - Description | | |
|------------------------------|--|-----------------|-----------------|
| 101695 | Genauigkeitsklasse - Accuracy class | % v. E. - f. s. | 0,05 |
| 100218 | Kontrollsignal - Control signal | % v. E - f. s. | 100 |
| 42828 | Erweiterter Temperaturbereich - Extended temperature range | | -30 °C...100 °C |
| 42829 | Erweiterter Temperaturbereich - Extended temperature range | | -30 °C...120 °C |
| 10294 | Kabeldose 7-polig Serie 712 - Female cable connector 7-pin series 712 | | |
| 10367 | Winkeldose 7-polig Serie 712 - Female angled connector 7-pin series 712 | | |
| 10316 | Anschlusskabel, 3 m, 7-polig Serie 712, freien Lötenden - Connection cable, 3 m, 7-pin series 712, free soldered ends | | |
| 103348 | Anschlusskabel winklig, 3 m, 7-polig Serie 712, freien Lötenden - Connection cable angled, 3 m, 7-pin series 712, free soldered ends | | |

Option Kalibrierungen - Option Calibrations

| Artikel-Nr. - Article-No. | Bezeichnung - Description | Stufen - Steps | Norm - Norm |
|------------------------------|---|----------------|------------------------------|
| 400676 | Linearitätsdiagramm - Linearity diagram | 25% | Werksnorm - Factory standard |
| 400664 | Linearitätsdiagramm - Linearity diagram | 10% | |
| 400961 | Werkskalibrierung - Proprietary calibration | 3 | VDI/VDE 2646 |
| 400700 | Werkskalibrierung - Proprietary calibration | 5 | |
| 400688 | Werkskalibrierung - Proprietary calibration | 8 | |
| | DAkKS-Kalibrierung - DAkKS-Calibration | | auf Anfrage - on request |



Mechanische Abmessungen - Dimensions



| Nenn Drehmoment - Nominal Torque [N·m] | Abmessungen - Dimensions [mm] | | | | | | | | | | | | | Schraubenanzugsmoment Tightening Torque [N·m] | Güteklasse Quality Class |
|---|----------------------------------|-----|-----|-----|----|---|----|-----|----|-----|----|---------|---|---|-----------------------------|
| | A | ØB | ØC | ØD | E | F | ØG | ØH | ØK | ØM | N | R | Q | | |
| 50 / 100 | 33 | 6,4 | 87 | 100 | 6 | 3 | 11 | 75 | 40 | 75 | 16 | 8 x M6 | 9 | 14 | 10.9 |
| 200 | 38,5 | 8,4 | 105 | 121 | 8 | 3 | 14 | 90 | 45 | 90 | 17 | 8 x M8 | 9 | 35 | 10.9 |
| 500 / 1000 | 43,5 | 13 | 133 | 156 | 12 | 3 | 20 | 110 | 70 | 110 | 18 | 8 x M12 | 9 | 120 | 10.9 |
| 2000 | 45,5 | 15 | 165 | 191 | 14 | 3 | 24 | 140 | 75 | 140 | 18 | 8 x M14 | 9 | 190 | 10.9 |
| 5000 / 10000 | 67 | 19 | 206 | 238 | 20 | 3 | 30 | 174 | 79 | 174 | 29 | 8 x M18 | 9 | 490 | 12.9 |