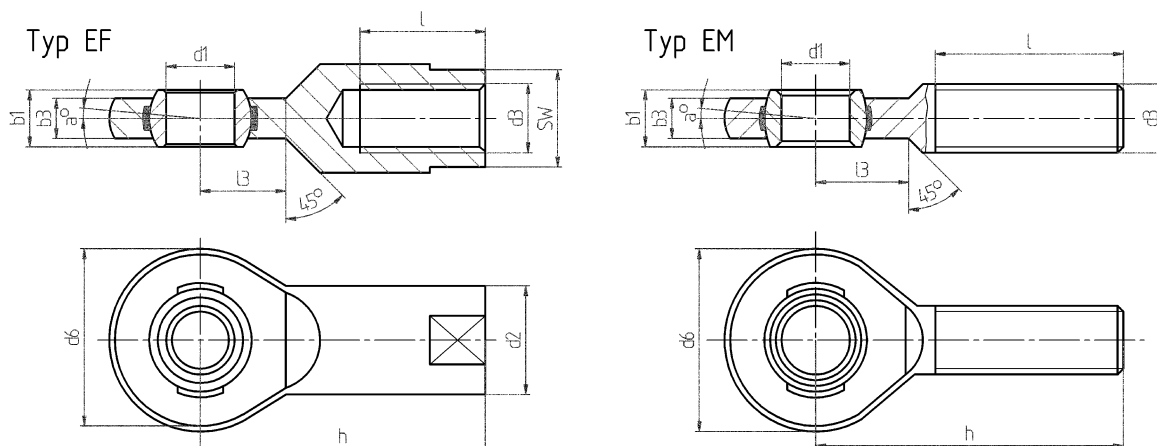


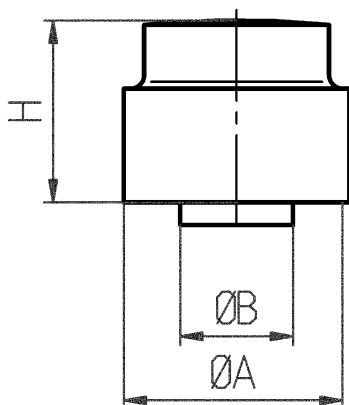
Gelenk-Öse mit Innengewinde / Aussengewinde



Typ EF	b 1	b 3	d 1	d 2	d 3	d 6	h	l	l 3	α	SW	Gewicht in kg	Tragzahlen stat. C_0 in N
EF 6	6 ₋₁₂₀	4	6 ₋₁₀ ⁺²	10	M 6	20	30	12	11	6,5°	9	0,017	9 805
EF 8	8 ₋₁₂₀	5	8 ₋₁₀ ⁺²	13	M 8	23	36	16	12	8,0°	11	0,031	15 935
EF 10	9 ₋₁₂₀	6	10 ₋₁₀ ⁺²	16	M 10	28	43	20	13	6,0°	14	0,054	23 535
EF 12	10 ₋₁₂₀	7	12 ₋₁₁ ⁺³	19	M 12	32	50	22	15	5°	17	0,086	30 890
EF 20	16 ₋₁₂₀	12	20 ₋₁₁ ⁺³	28	M 20 x 1,5	51	77	33	23	4,5°	24	0,290	85 320
EF 25	20 ₋₁₂₀	16	25 ₋₁₃ ⁺³	35	M 24 x 2	62	94	42	30	3,5°	30	0,57	139 255
EF 35	25 ₋₁₂₀	20	35 ₋₁₅ ⁺³	48	M 36 x 3	82	125	61	38	3,5°	41	1,23	230 455
EF 45	32 ₋₁₂₀	25	45 ₋₁₅ ⁺³	65	M 45 x 3	102	165	76	50	4°	55	3,085	367 750
EF 50	35 ₋₁₂₀	28	50 ₋₁₅ ⁺³	70	M 52 x 3	112	195	89	60	3°	60	3,975	453 065
EF 60	44 ₋₁₅₀	36	60 ₋₁₉ ⁺⁴	82	M 60 x 4	135	225	103	70	3,5°	70	7,300	706 320

Typ EM	b 1	b 3	d 1	d 3	d 6	h	l	l 3	α	Gewicht kg	Tragzahlen stat. C_0
EM 6	6 ₋₁₂₀	4	6 ₋₁₀ ⁺²	M 6	20	36	22	11	6,5°	0,014	5395
EM 8	8 ₋₁₂₀	5	8 ₋₁₀ ⁺²	M 8	23	42	25	12	8°	0,024	10005
EM 10	9 ₋₁₂₀	6	10 ₋₁₀ ⁺²	M 10	28	48	29	15	6°	0,041	16475
EM 12	10 ₋₁₂₀	7	12 ₋₁₁ ⁺³	M 12	32	54	33	15	5°	0,067	24025
EM 17	14 ₋₁₂₀	10	17 ₋₁₁ ⁺³	M 16	44	69	40	23	5,5°	0,163	46780
EM 20	16 ₋₁₂₀	12	20 ₋₁₃ ⁺³	M 20 x 1,5	51	78	47	25	4,35°	0,270	84730
EM 25	20 ₋₁₂₀	16	25 ₋₁₃ ⁺³	M 24 x 2	62	94	57	32	3,5°	0,508	122290

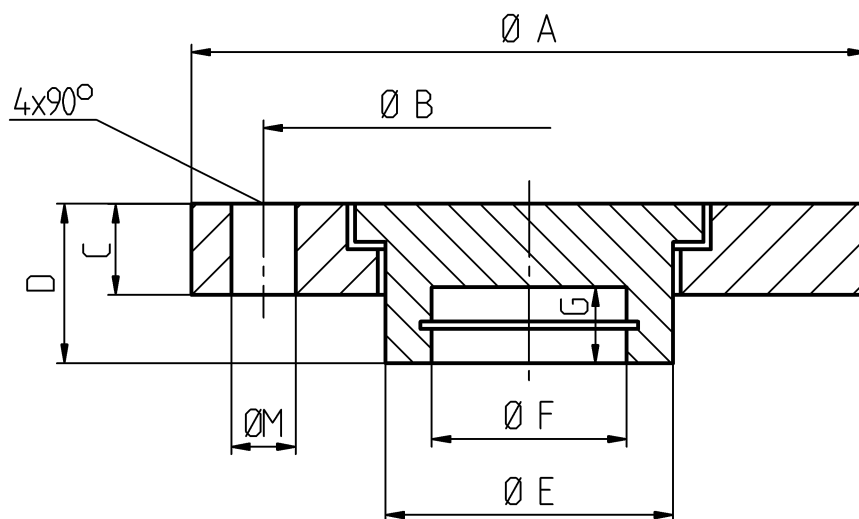
Druckstück Typ ED-7 (verwendet für Kraftsensor K18)



Meßbereich in kN	Ø A	Ø B	H
5	12	5	20
10	16	8	25
20	24	15	30
50	30	15	30
100	37	20	40
200	50	25	45
500	62	30	50
1000	120	68	80
2000	120	68	80
3000	125	68	80

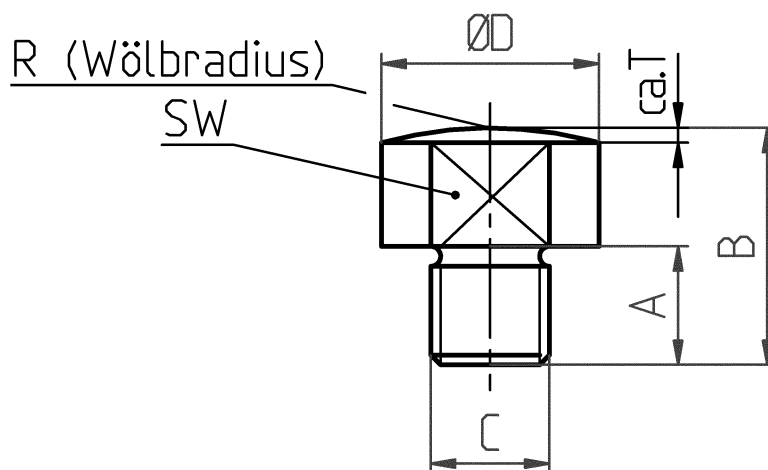
Bei der Bestellung bitte den gewünschten Messbereich angeben

Druckstück und Befestigungsflansch Typ EF42 (verwendet für Kraftsensor K450)



Meßbereich in kN	A	B	C	D	E	F	G	M
1 - 10	89	70	12	21	37,9	13,6	6	8,5
20 - 50	89	70	12	21	37,9	25,7	10	8,5
100 - 200	115	90	14	28	47,9	33	10	12,5
500 - 1000	149	120	18	50	81,9	46	12	16,5

Druckstück Typ E2 (verwendet für Kraftsensor K11)



Meßbereich [kN]	Ø D	A	B	C	SW	R	T
0,5...10	22	12	24	M 12	18	60	1
20, 50	52	15	30	M24x2	45	230	1,5
100, 200	65	15	30	M36x3	45	295	1,8
500	85	20	40	M45x3	50	450	2,0

Bei der Bestellung bitte den gewünschten Messbereich angeben

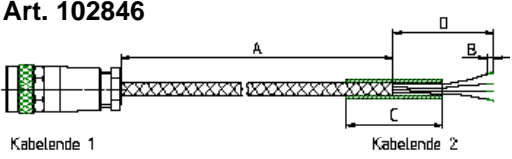
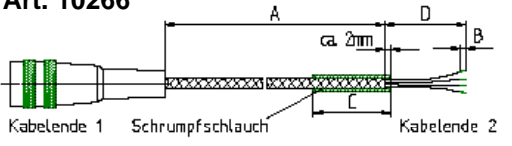
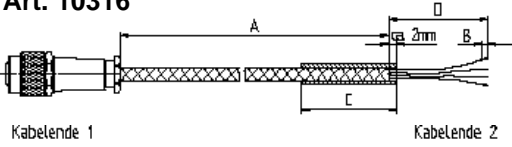
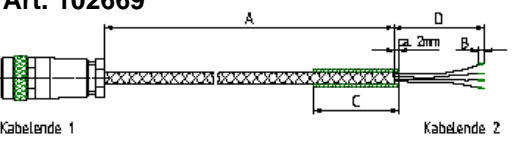
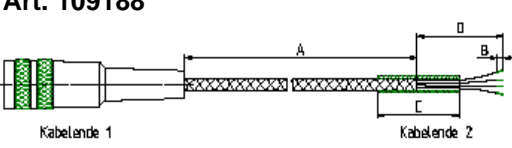
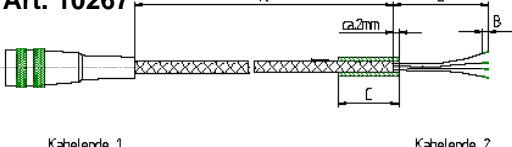
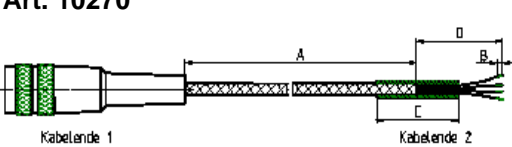
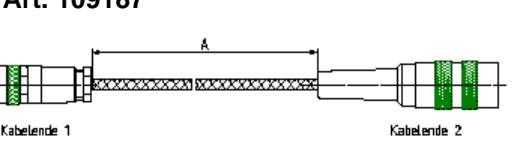
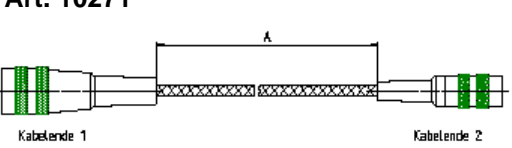
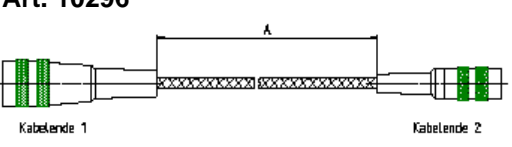
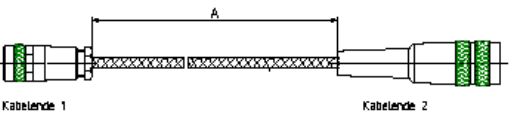
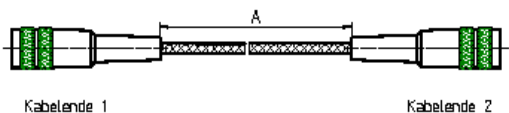
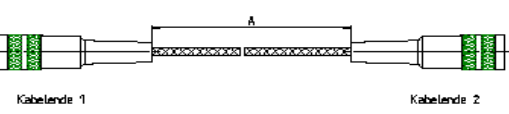
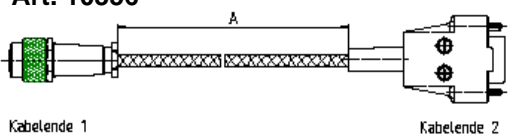
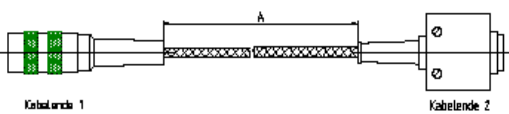
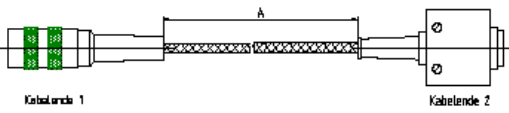
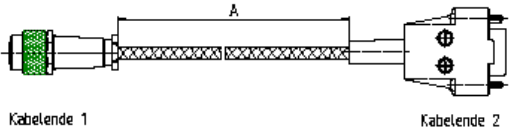
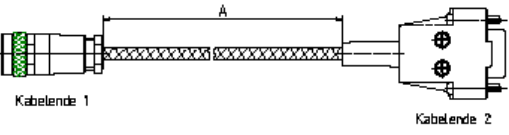
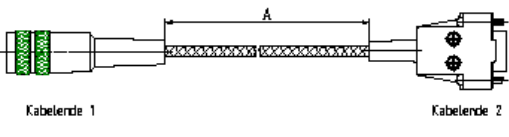
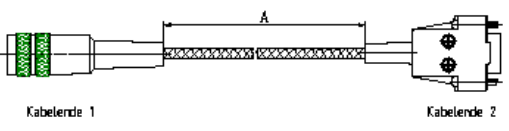
Abbildung / Zeichnung	Kabellänge	Ende-1	Ende-2	Anwendung
Art. 102846  <p>Kabelende 1 Kabelende 2</p>	3 m	Buchse Female 5 polig	Litze	Kraftsensor K-2142 K-2188
Art. 10266  <p>Kabelende 1 Schrumpfschlauch Kabelende 2</p>	3 m	Buchse Female 6 polig	Litze	Kraftsensor K11 Drehmoment- sensoren
Art. 10316  <p>Kabelende 1 Kabelende 2</p>	3 m	Buchse Female 7 polig	Litze	Kraftsensor K1882 Drehmoment- sensoren
Art. 102669  <p>Kabelende 1 Kabelende 2</p>	3 m	Buchse Female 8 polig	Litze	Miniatur Drehmoment- Sensoren
Art. 109188  <p>Kabelende 1 Kabelende 2</p>	3 m	Buchse Female 12 polig	Litze	Dual Range Sensoren
Art. 10267  <p>Kabelende 1 Kabelende 2</p>	3 m	Buchse Female 12 polig	Litze	Drehmoment Sensoren DR-12 DR-20
Art. 10270  <p>Kabelende 1 Kabelende 2</p>	3 m	Buchse Female 12 polig	Litze	Aktive Drehmoment- sensoren
Art. 109187  <p>Kabelende 1 Kabelende 2</p>	3 m	Buchse Female 5 polig	Stecker Male 6 polig	Kraftsensoren
Art. 10271  <p>Kabelende 1 Kabelende 2</p>	3 m	Buchse Female 6 polig	Stecker Male 6 polig	Kraftsensor Drehmoment- sensoren
Art. 10296  <p>Kabelende 1 Kabelende 2</p>	3 m	Buchse Female 7 polig	Stecker Male 6 polig	Kraftsensor Drehmoment- sensoren

Abbildung / Zeichnung	Kabellänge	Ende-1	Ende-2	Anwendung
Art. 10279 	3 m	Buchse Female 8 polig	Stecker Male 12 polig	Miniatur Drehmoment- Sensoren
Art. 10273 	3 m	Buchse Female 12 polig	Stecker Male 12 polig	Drehmoment- Sensoren DR-12 DR-20
Art. 10283 	3 m	Buchse Female 12 polig	Stecker Male 12 polig	Miniatur Drehmoment- Sensoren
Art. 10356 	3 m	Buchse Female 5 polig	D-SUB Male 15 polig	Kraftsensor K-2142
Art. 10355 	0.1 m	Buchse Female 6 polig	D-SUB Male 15 polig	Kraftsensor Drehmoment- sensoren
Art. 10269 	3 m	Buchse Female 6 polig	D-SUB Male 15 polig	Kraftsensor Drehmoment- sensoren
Art. 10365 	3 m	Buchse Female 7 polig	D-SUB Male 15 polig	Kraftsensoren
Art. 103075 	3 m	Buchse Female 8 polig	D-SUB Male 15 polig	Miniatur Drehmoment- sensoren
Art. 10312 	3 m	Buchse Female 12 polig	D-SUB Male 15 polig	Drehmoment- sensoren DR-12 DR-20
Art. 10268 	3 m	Buchse Female 12 polig	D-SUB Male 15 polig	Miniatur Drehmoment- sensoren